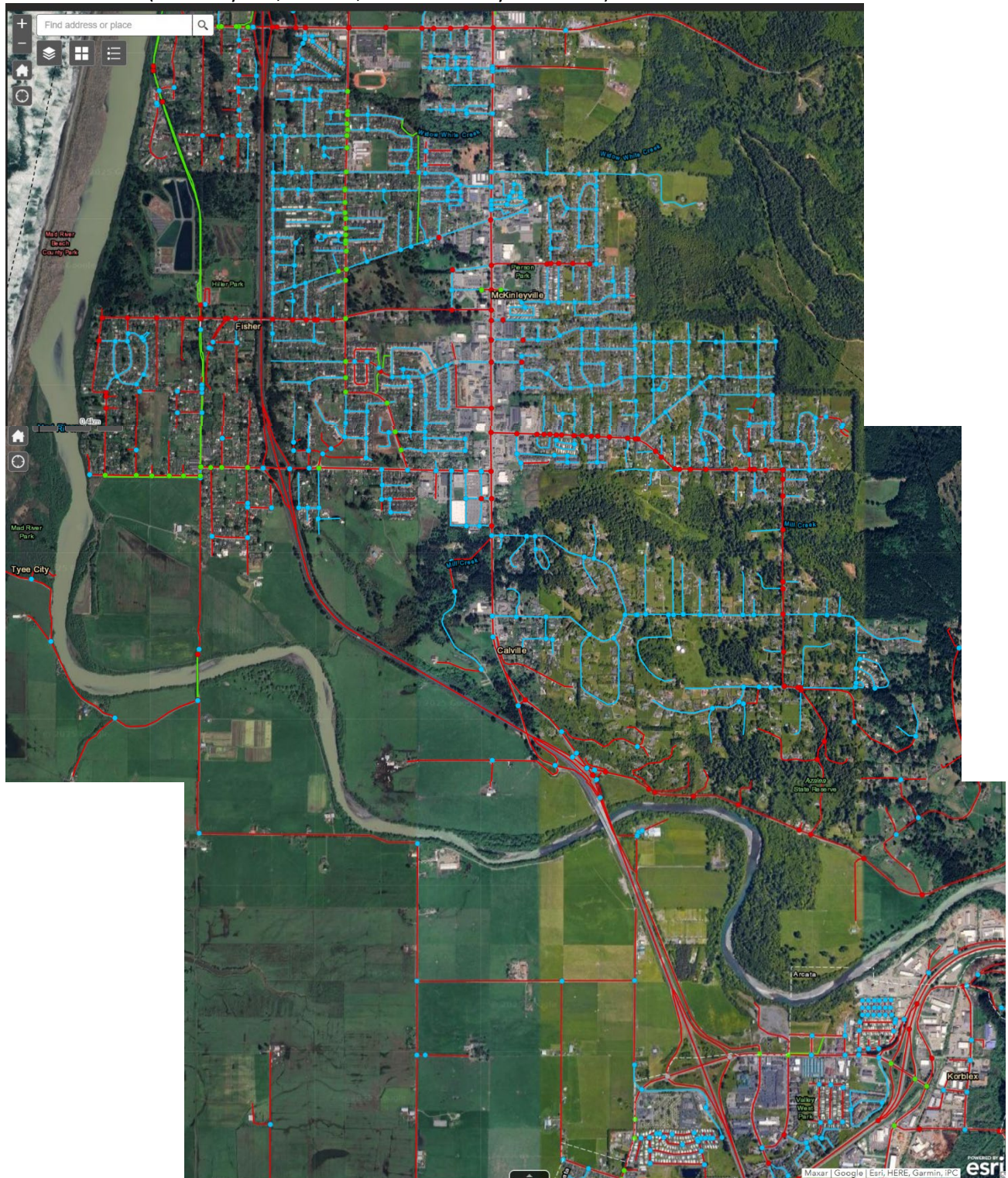


North to south – PED LTS SCORES (Little River, Clam Beach area)



PED LTS SCORE (McKinleyville, Korblex, & Arcata Valley West area)



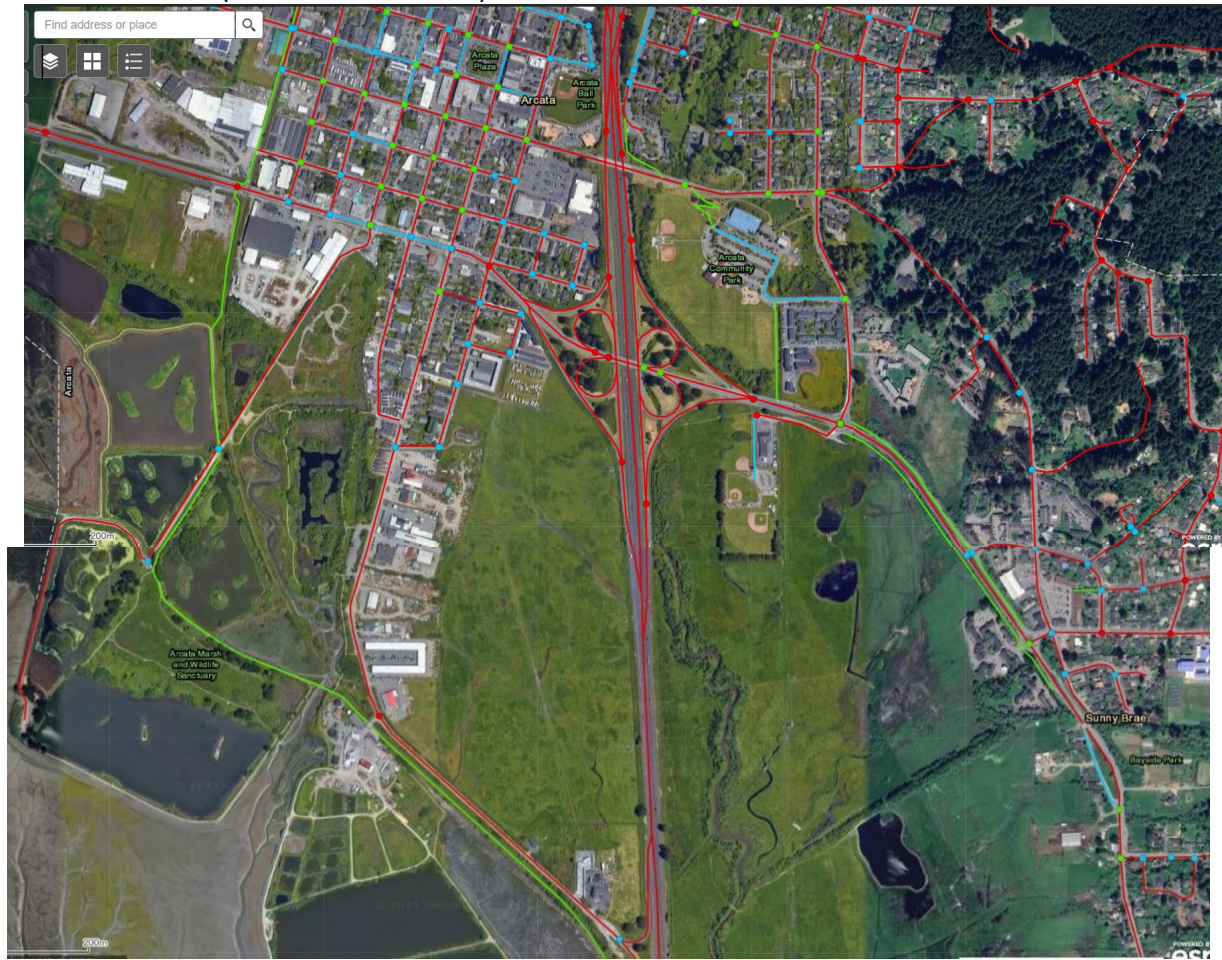
(Arcata area)



(shifted westward below)



PED LTS SCORES (Arcata southern area)



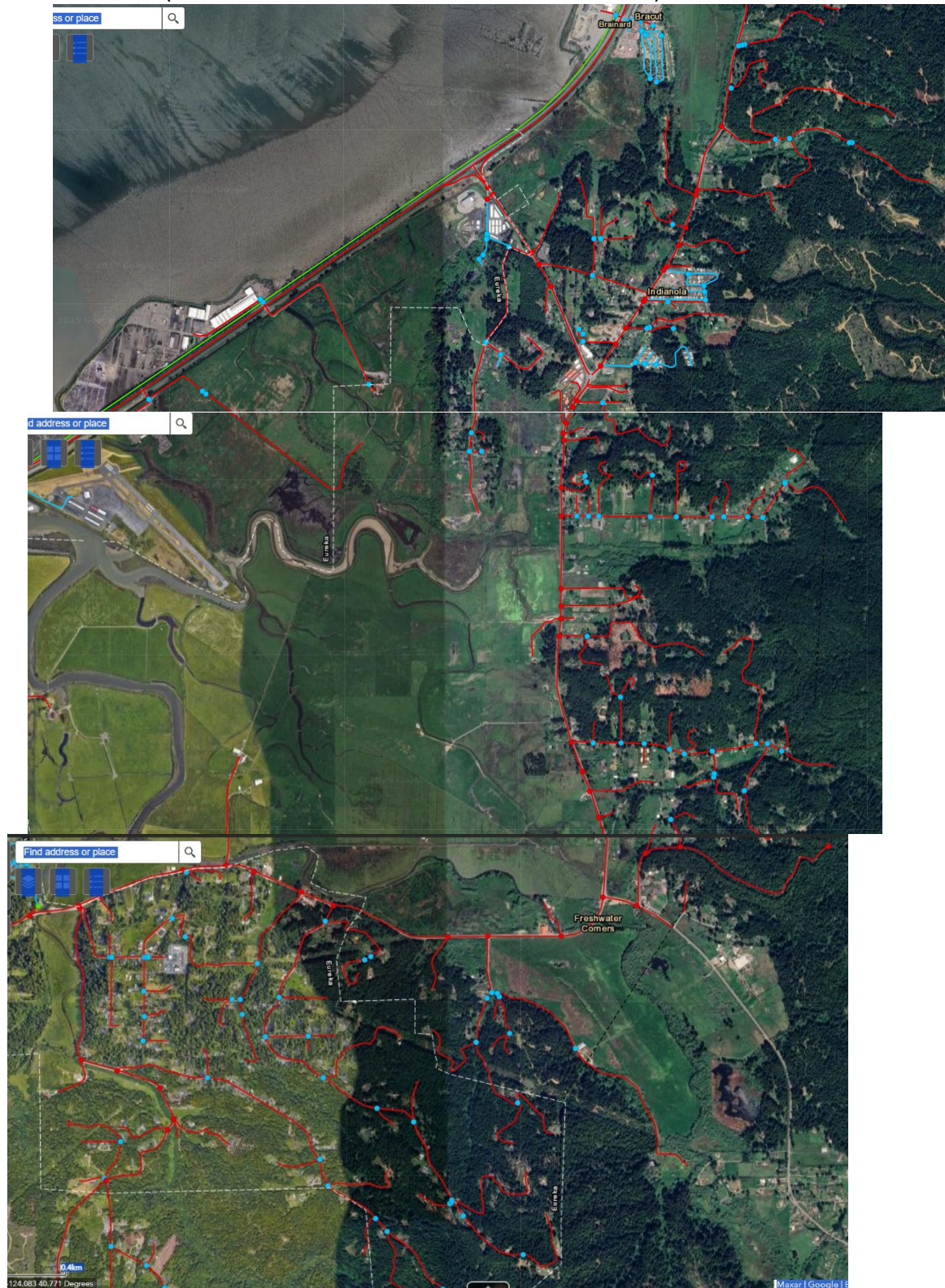
(Arcata–Sunny Brae area)



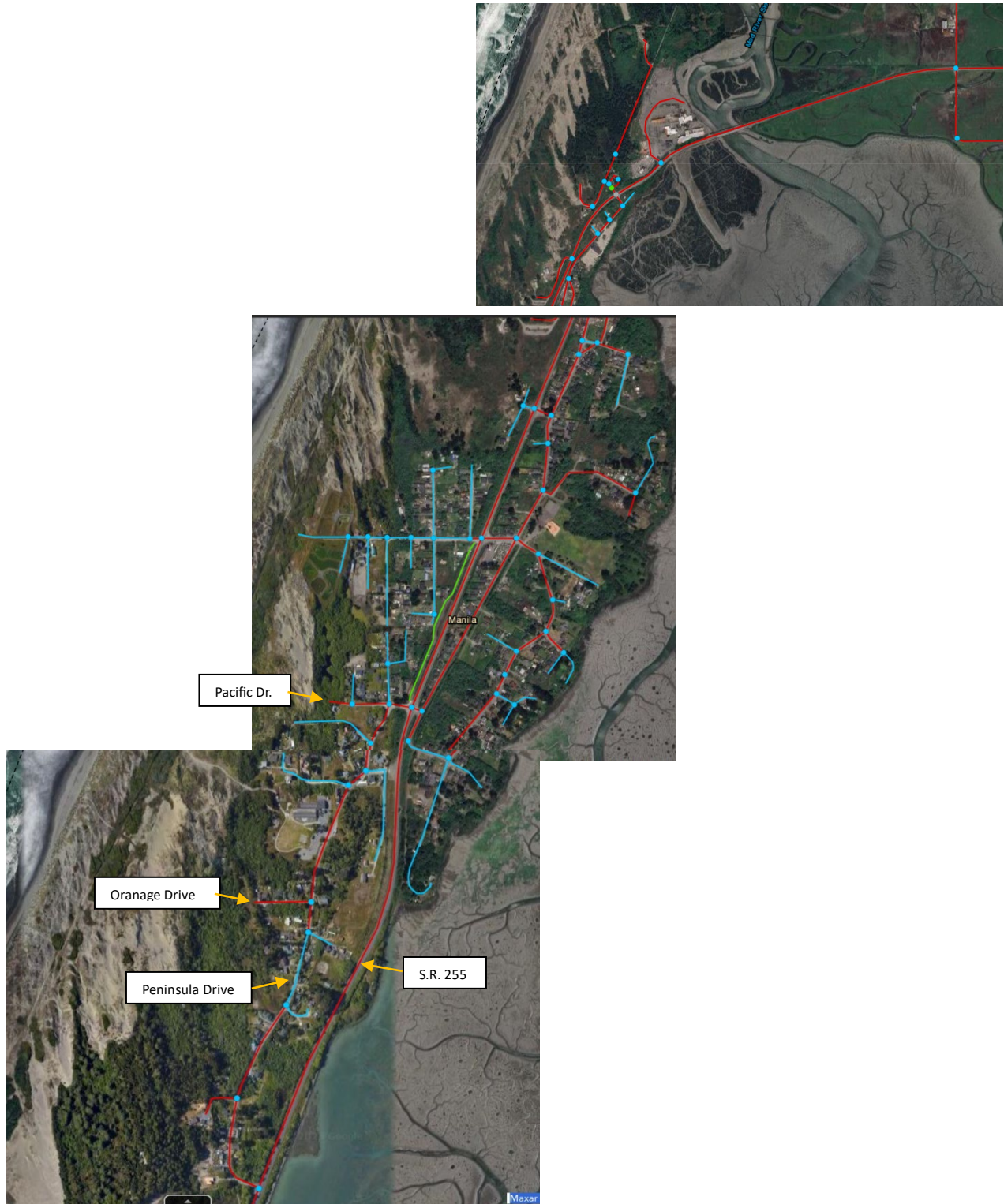
PED LTS SCORES (Arcata—Bayside & Jacoby Creek area)



PED LTS SCORE (Bracut – Indianola area& Freshwater Corners area)



PED LTS SCORE (Mad River Slough to Manila)



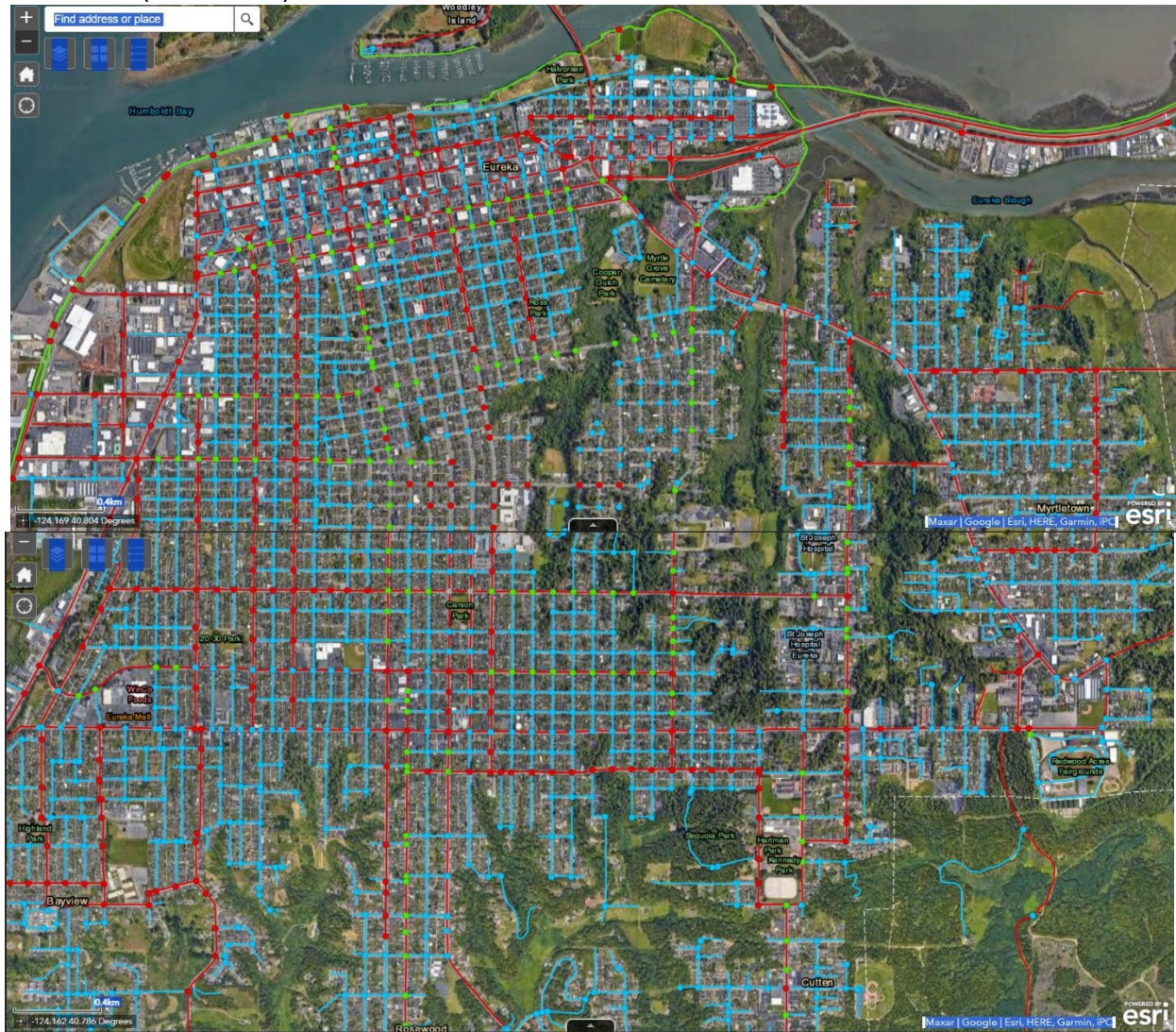
PED LTS SCORE (Town of Samoa area)



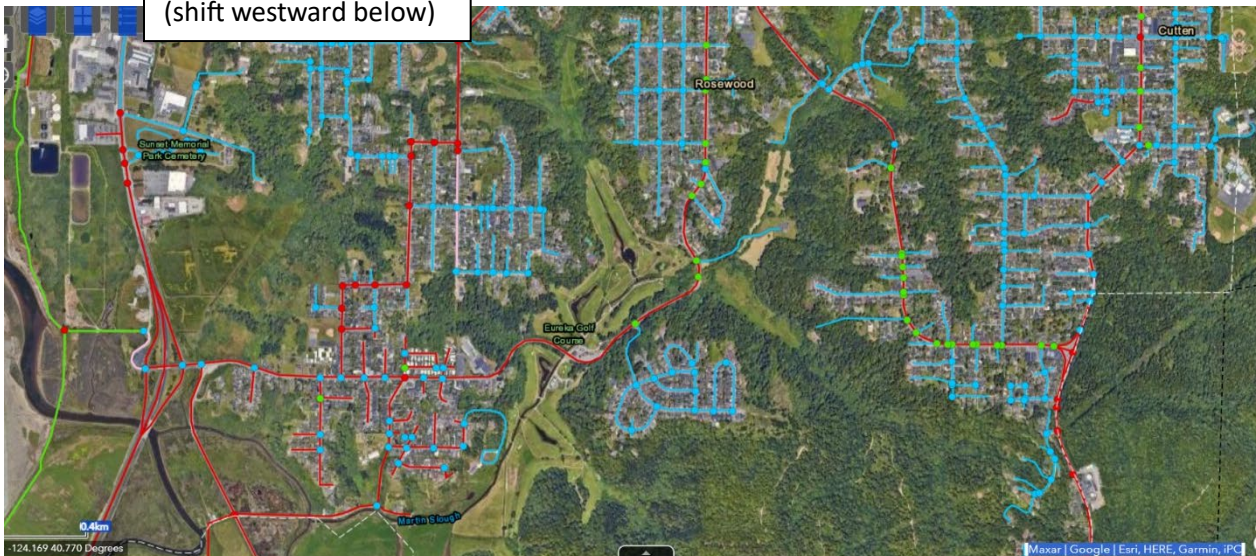
PED LTS SCORES (Fairhaven area)



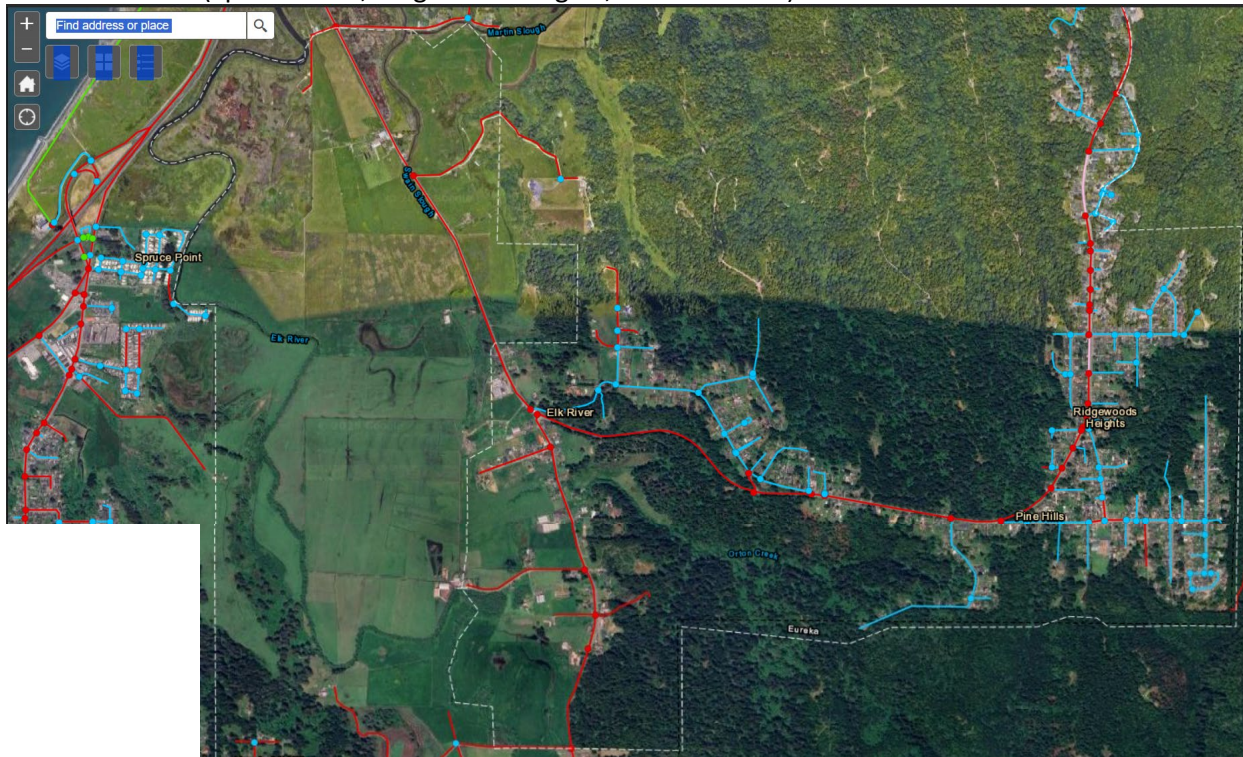
PED LTS SCORE (Eureka area)



(shift westward below)



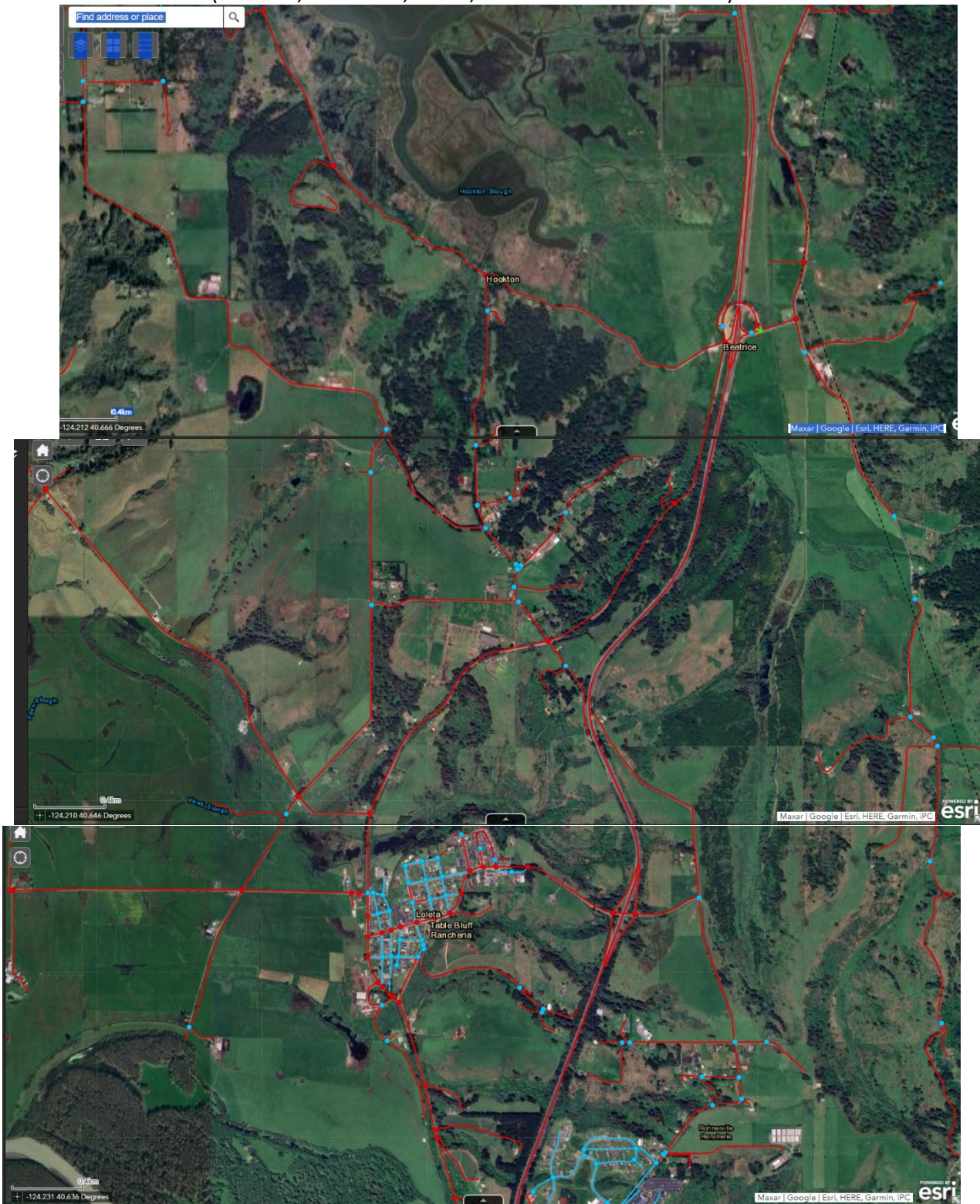
PED LTS SCORES (Spruce Point, Ridgewood Heights, Pine Hills area)



(King Salmon, Fields Landing, Humboldt Hill, College of the Redwoods area)



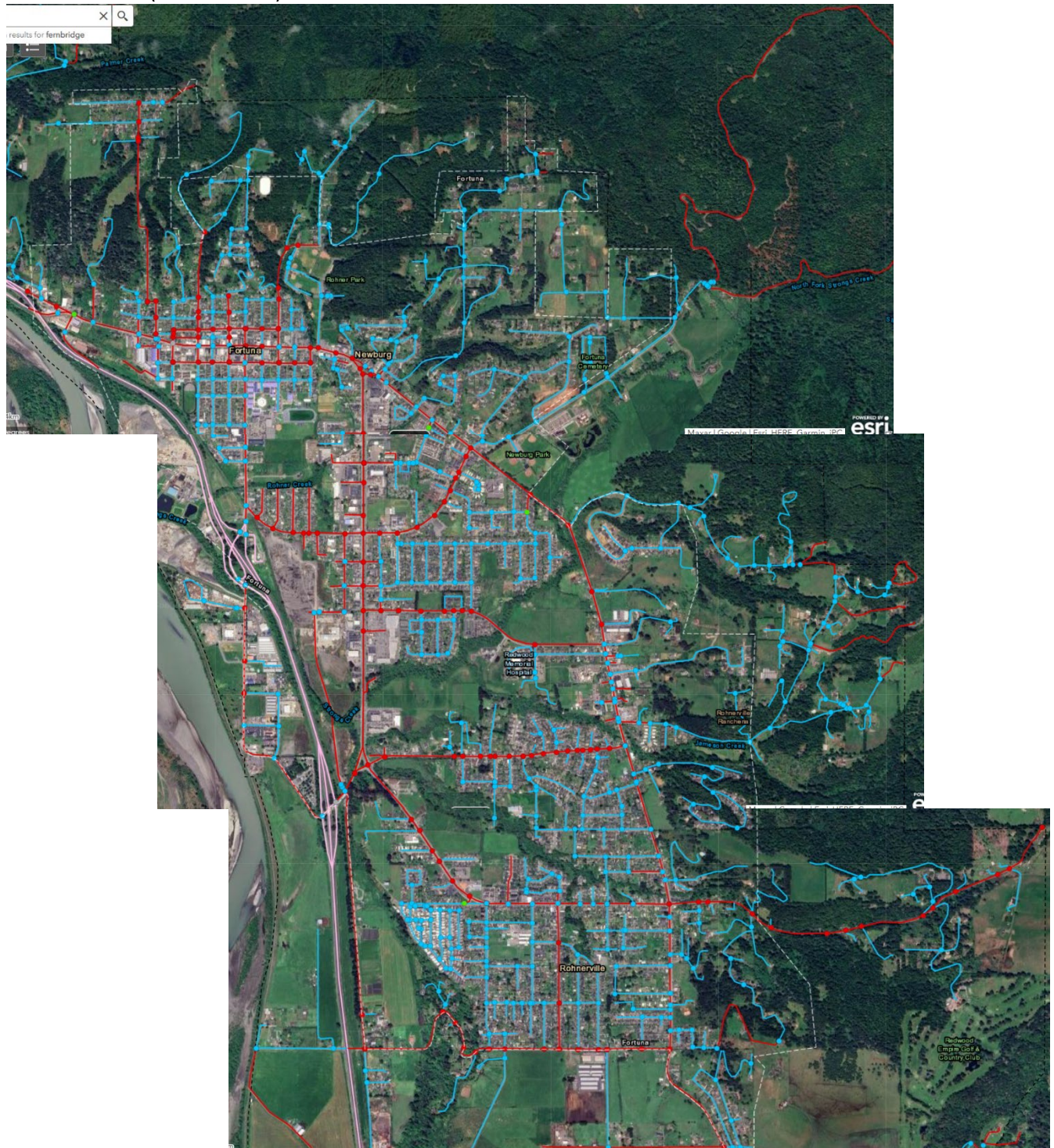
PED LTS SCORES (Hookton, Table Bluff, Loleta, Rohnerville Rancheria area)



PED LTS SCORES (Fernbridge area)



PED LTS SCORES (Fortuna area)



PED LTS SCORES (Alton area)

