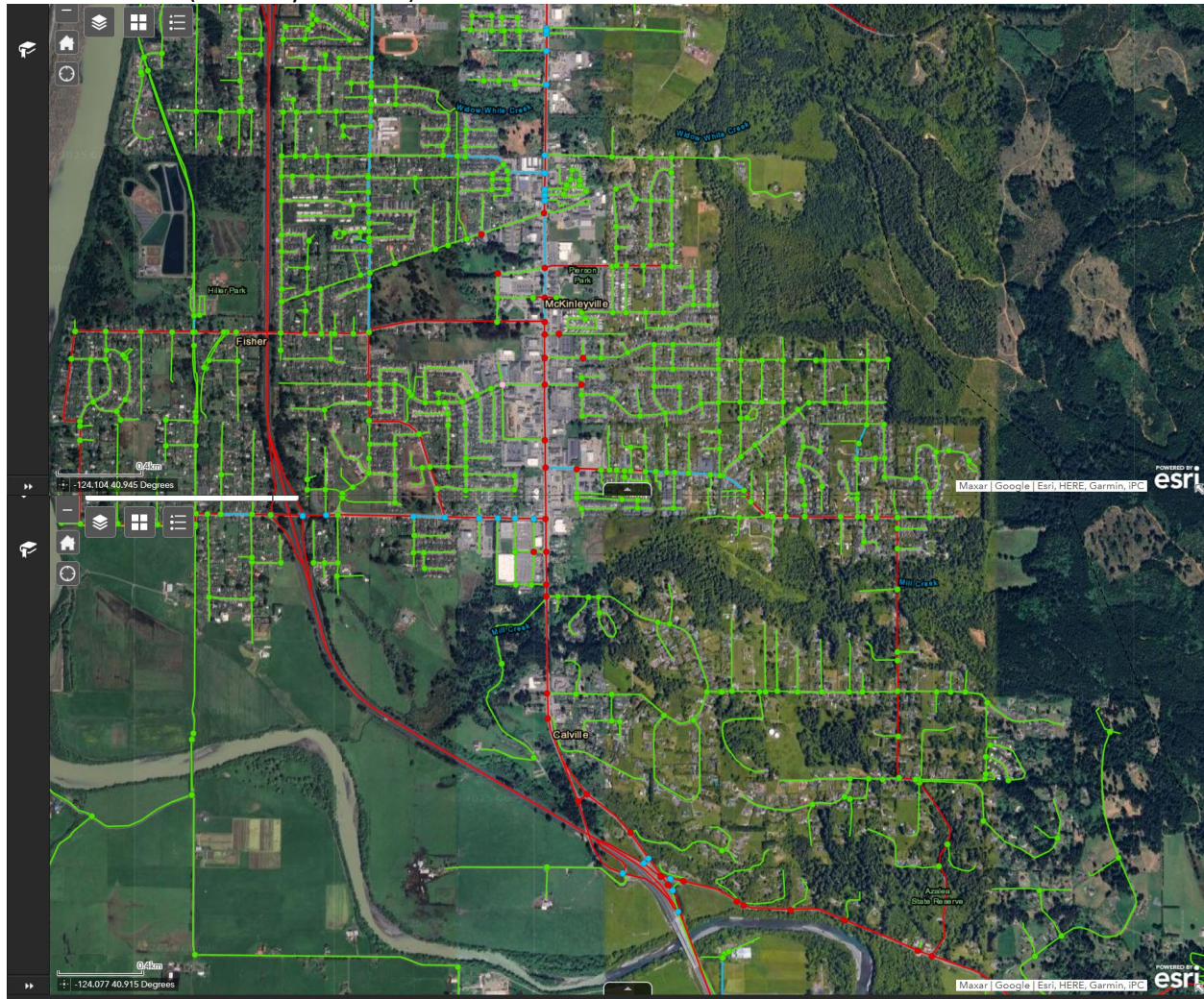
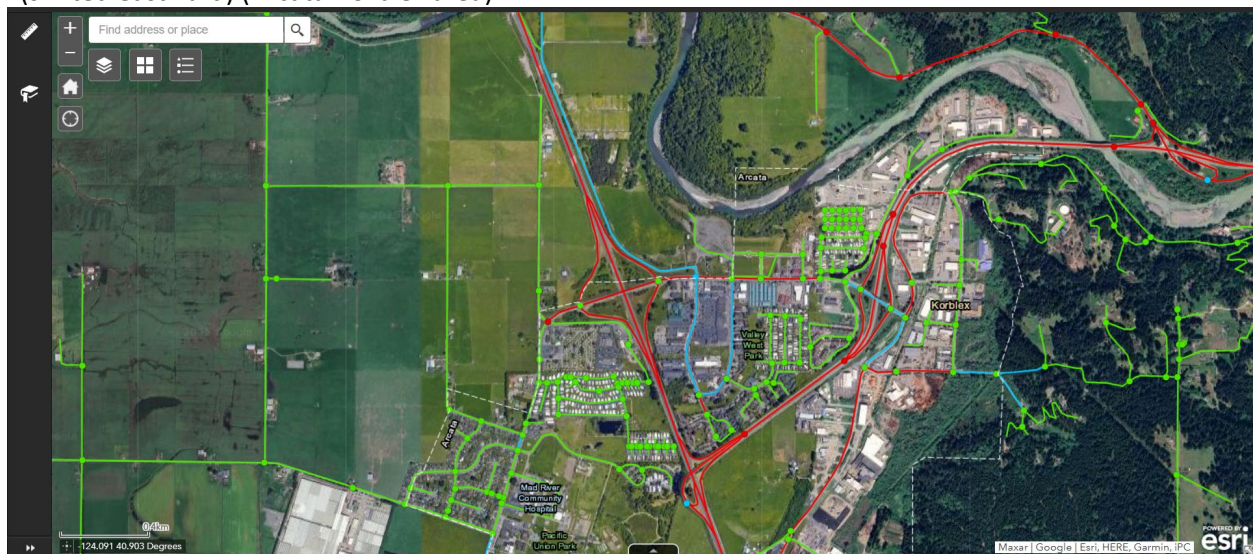


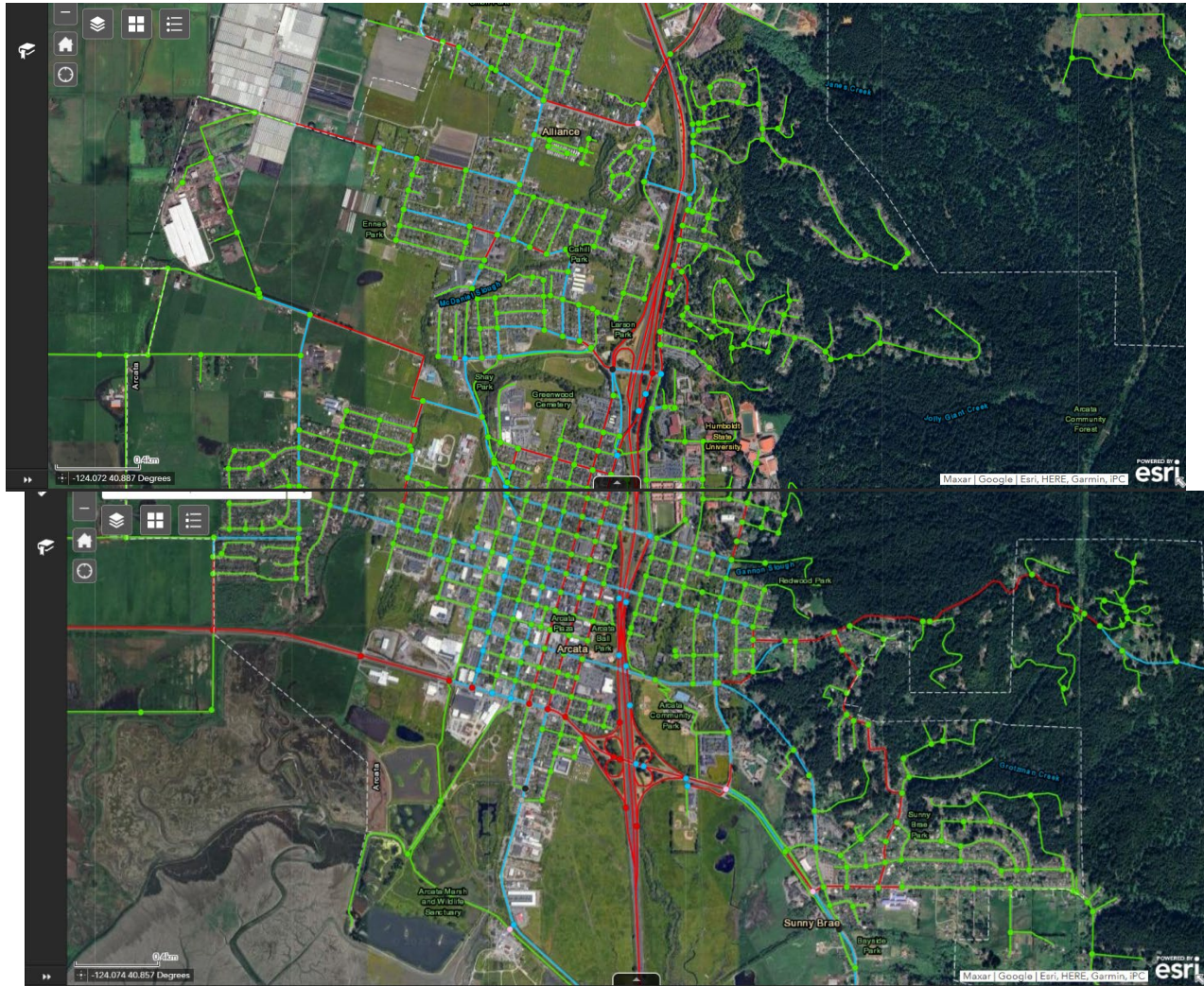
BIKE LTS SCORE (McKinleyville Area)



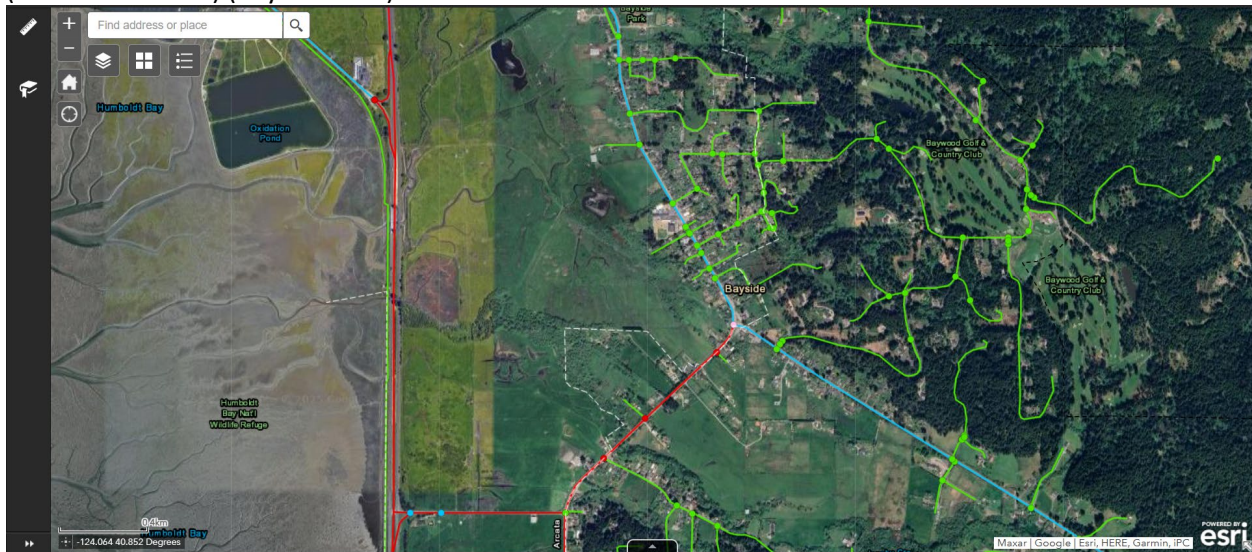
(shifted eastward) (Arcata-Korblex area)



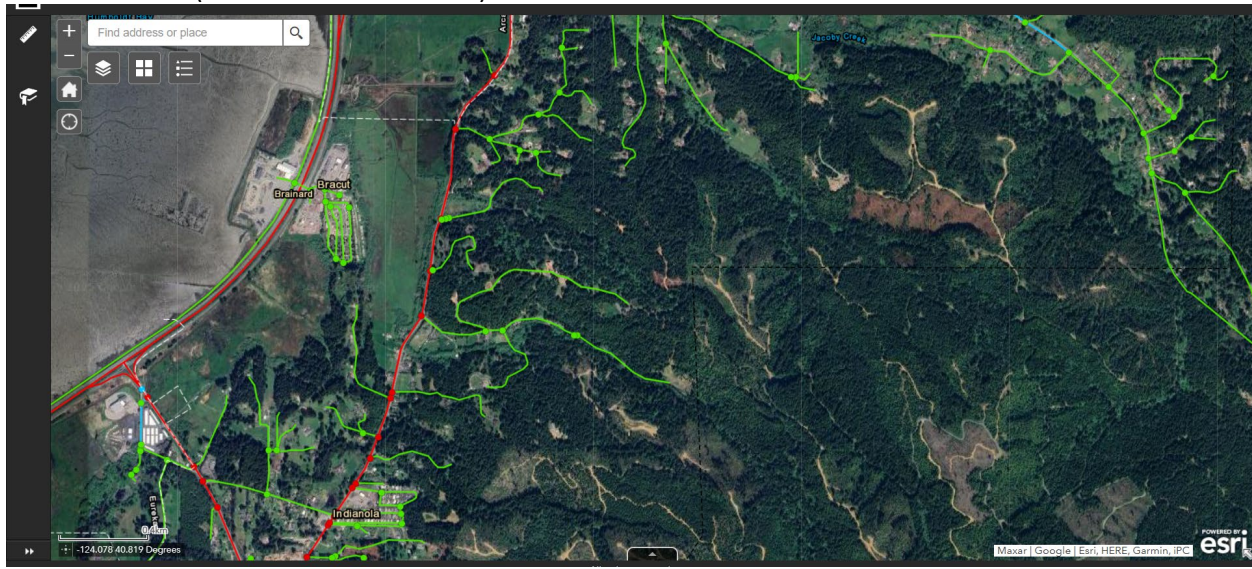
BIKE LTS SCORE (Arcata-area)



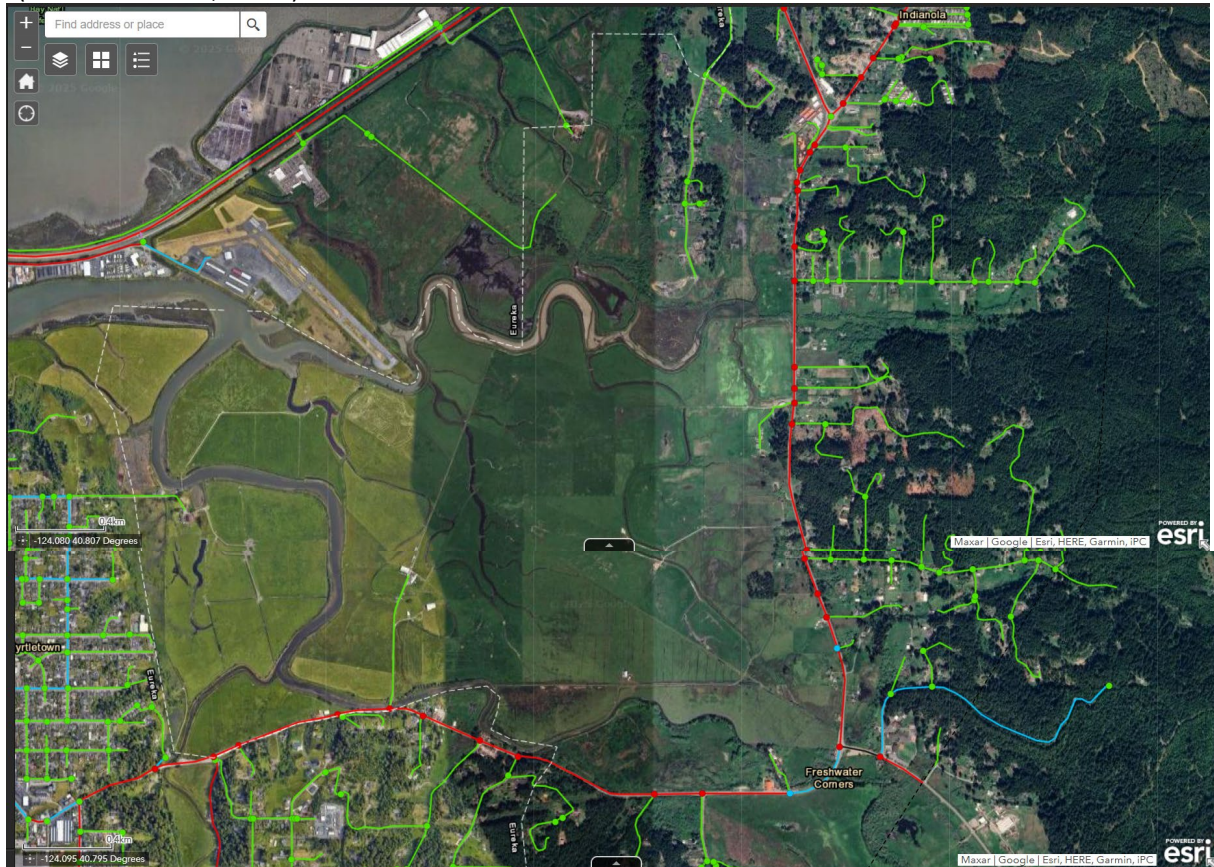
(shifted eastward) (Bayside area)



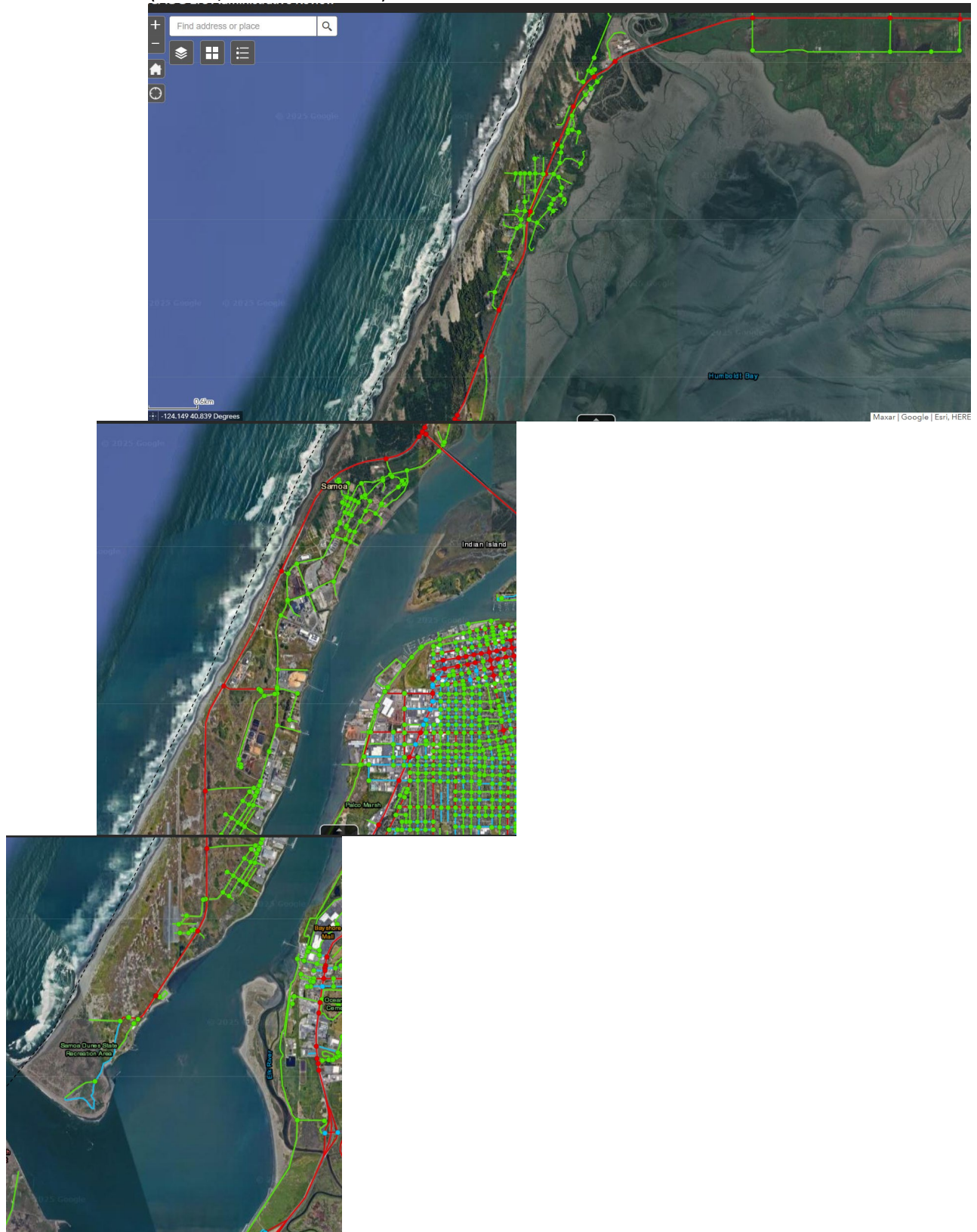
BIKE LTS SCORE (Bracut – Indianola area)



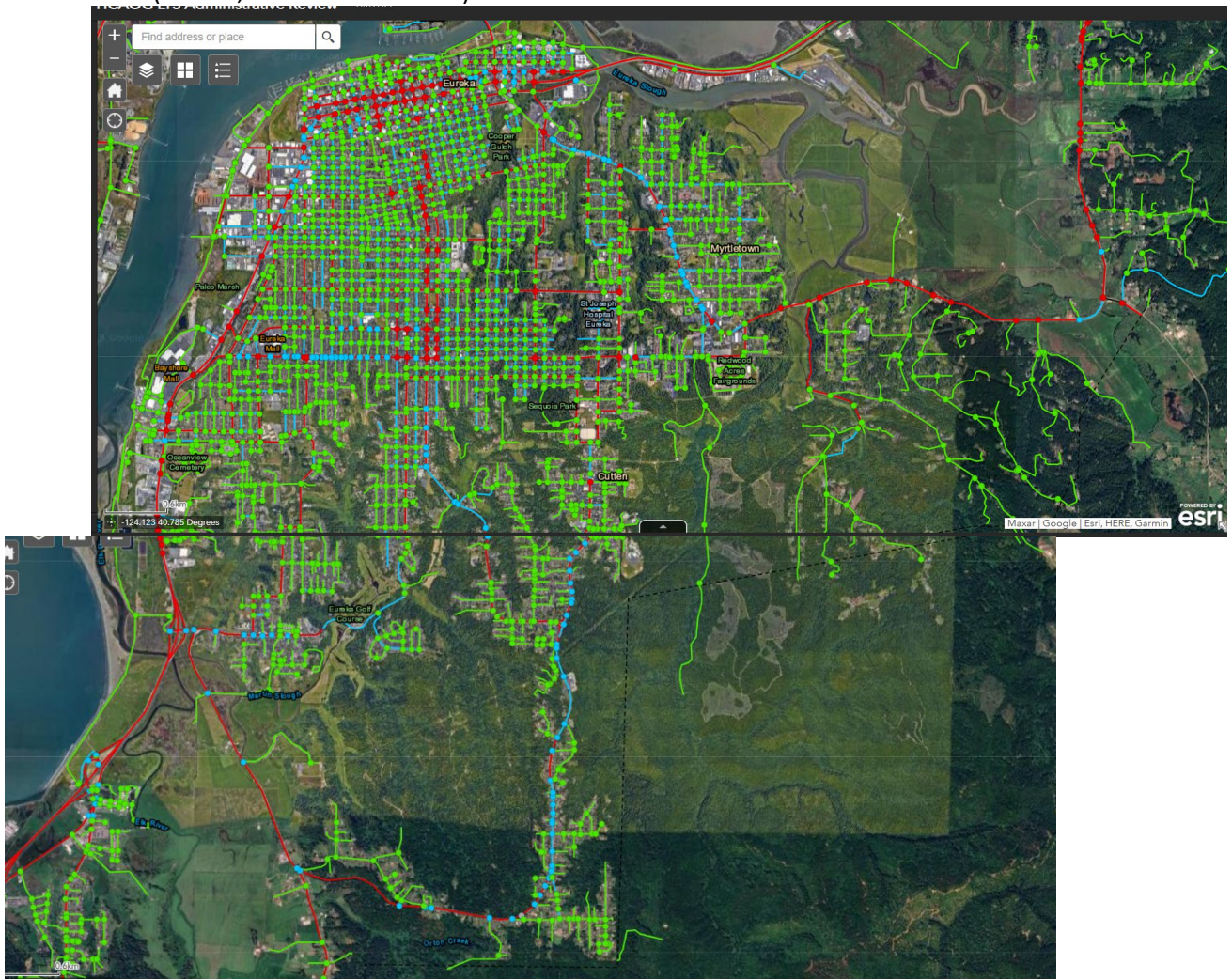
(shifted westward, below)



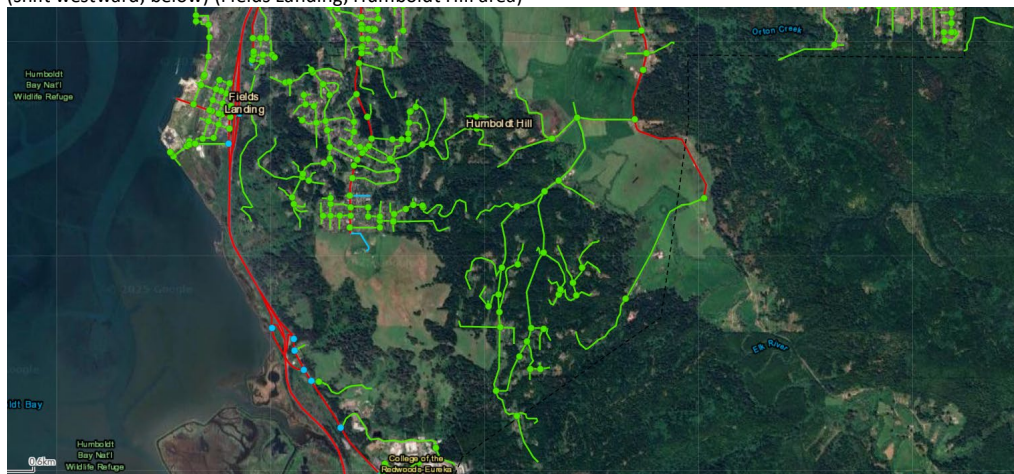
BIKE LTS SCORE (Manila, Samoa Peninsula)



BIKE LTS SCORE (Eureka, Humboldt Hill area)



(shift westward, below) (Fields Landing, Humboldt Hill area)



[illegible]

The image displays two satellite maps of the Rohnerville area in California. The top map shows a broader view, including the Redwood National and State Park to the north and the Redwood Empire Golf & Country Club to the south. Key features labeled include Rohnerville, Fortuna, and various creeks like the Eureka River and Redwood Creek. The bottom map provides a closer view of the Rohnerville area, highlighting the Redwood Empire Golf & Country Club and the surrounding residential and commercial areas. Both maps show a network of roads and green spaces, with the Redwood National and State Park being a prominent feature in the background.

BIKE LTS SCORES (Alton area)

