

Survey About Walking and Biking to School – For Parents Washington Elementary School Fall 2008

Survey Summary

Number of Surveys Completed: 149

Students

Kindergarten	20
First	18
Second	20
Third	35
Fourth	19
Fifth	37

Female	74
Male	75

Number of Children in K-8th Grade

One	75
Two	56
Three	11
Four	4
Five	0
Six	0

Student Demographics

Students by Ethnicity Washington Elementary School, 2007-08			
	School		District
	Enrollment	Percent of Total	Percent of Total
American Indian	20	4.8%	7.1%
Asian	12	2.9%	7.2%
Pacific Islander	3	0.7%	1.2%
Filipino	2	0.5%	0.5%
Hispanic	17	4.1%	11.5%
African American	13	3.1%	2.4%
White	271	64.7%	57.2%
Multiple/No Response	81	19.3%	12.9%
Total	419	100%	100%

California Department of Education: Ed-Data 2007-2008

Special Programs Washington Elementary School, 2007-08			
	School		District
	Number of Students	Percent of Enrollment	Percent of Enrollment
English Learners	17	4.1%	11.8%
Free/Reduced Price Meals ¹	167	39.9%	58.7%
Compensatory Education	412	98.3%	60.2%
Title I	Yes, Schoolwide Plan	--	--

California Department of Education: Ed-Data 2007-2008

Student Physical Fitness Report Demographics

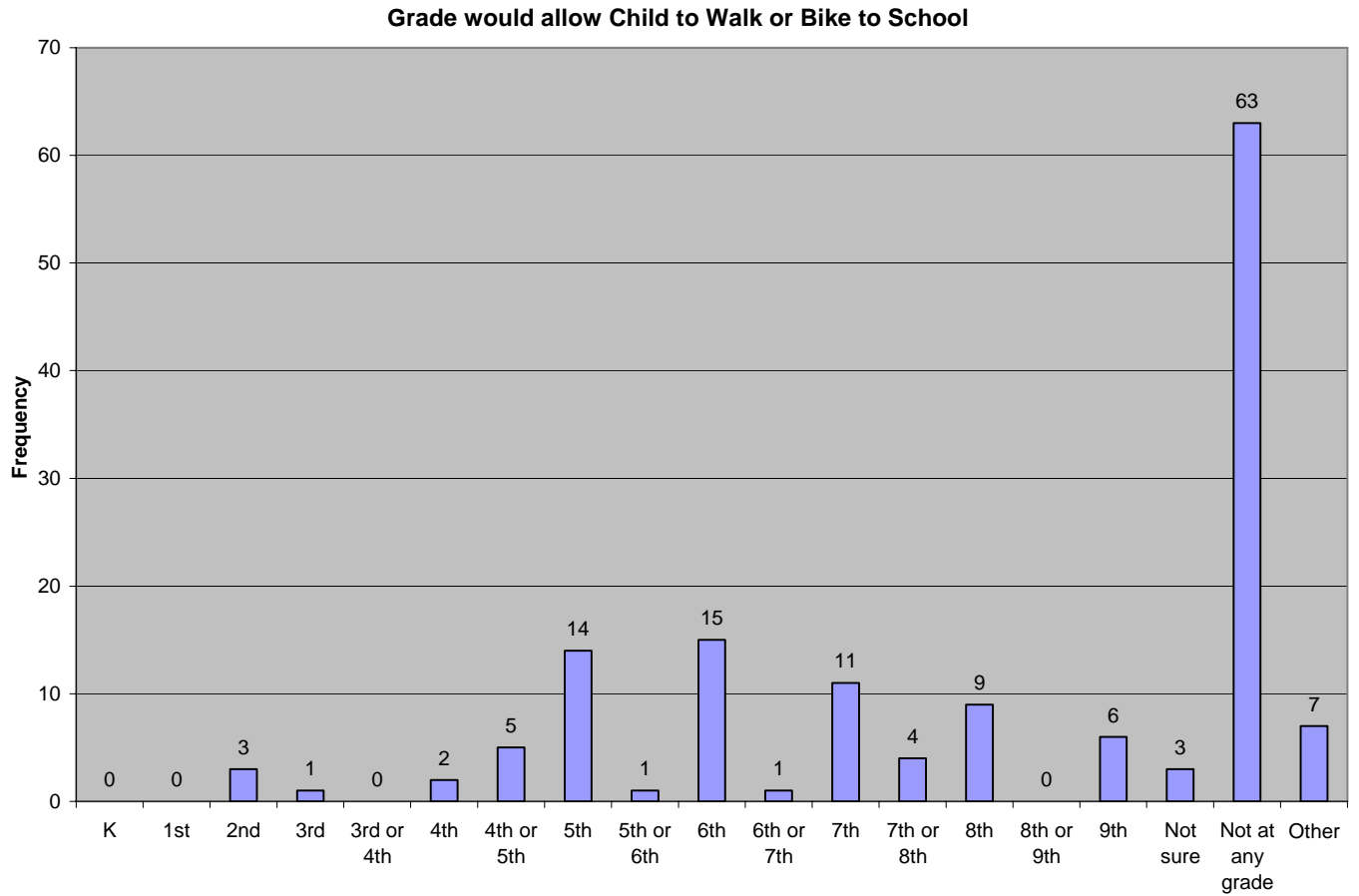
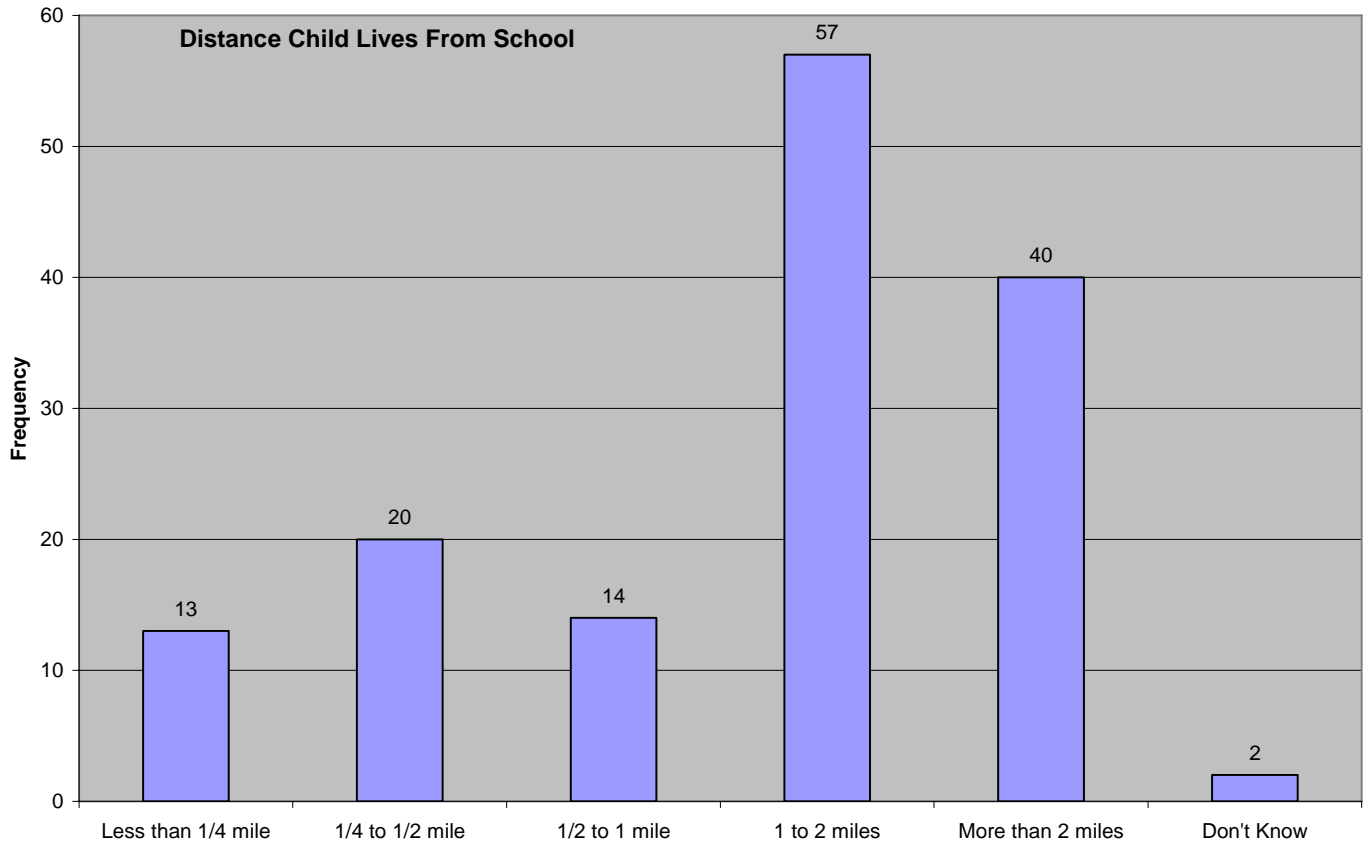
2007-08 California Physical Fitness Report

Washington Elementary School

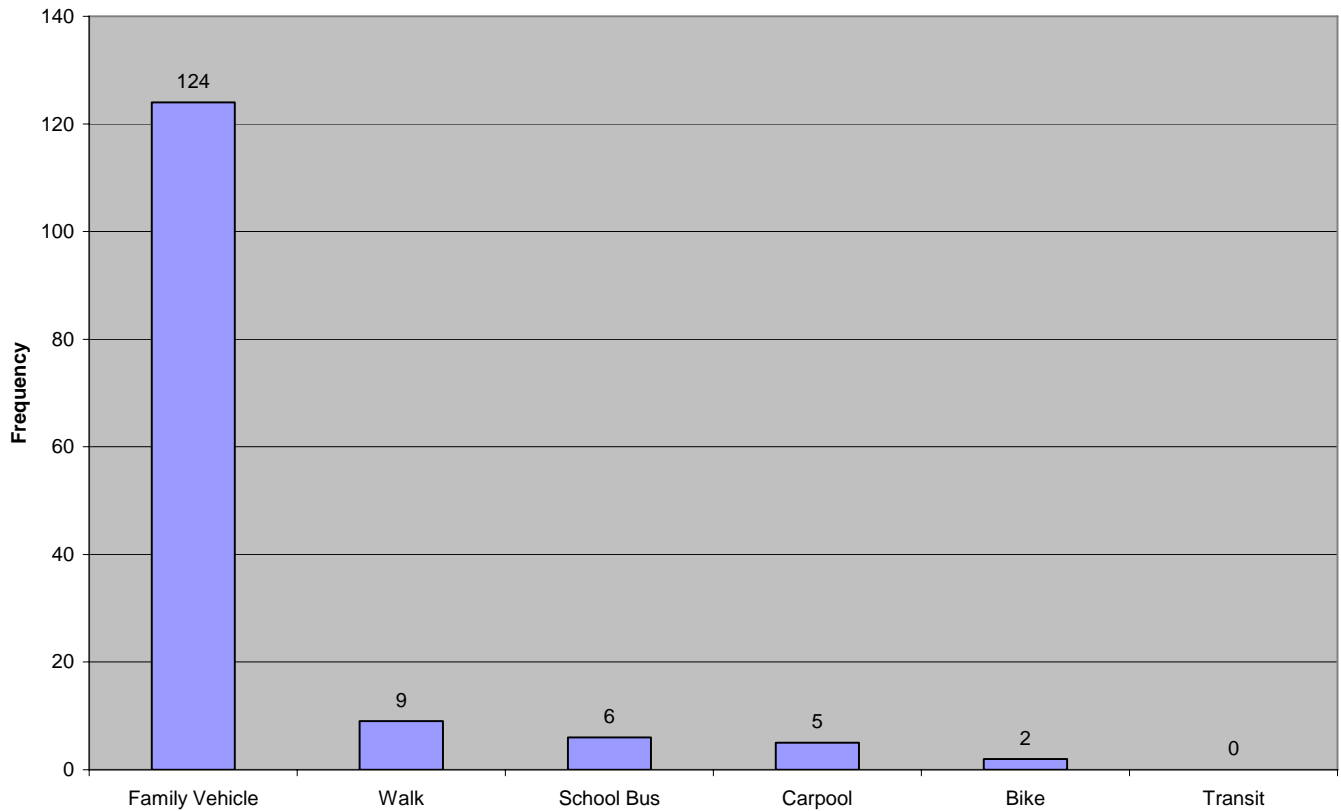
Summary of Results

	Grade 5		
<u>Physical Fitness Area</u>	Total ¹ Tested	% In HFZ	% Not in HFZ
Aerobic Capacity	54	35.2	64.8
Body Composition	54	61.1	38.9
Abdominal Strength	54	96.3	3.7
Trunk Extensor Strength	54	87.0	13.0
Upper Body Strength	54	57.4	42.6
Flexibility	54	68.5	31.5
	Grade 5		
Number of Physical Fitness Areas Meeting the Healthy Fitness Zone	Number	Percent	Cum. Percent
6 of 6 fitness criteria	8	14.8	14.8
5 of 6 fitness criteria	15	27.8	42.6
4 of 6 fitness criteria	13	24.1	66.7
3 of 6 fitness criteria	10	18.5	85.2
2 of 6 fitness criteria	6	11.1	96.3
1 of 6 fitness criteria	2	3.7	100.0
0 of 6 fitness criteria	0	0.0	100.0
Total tested	54	100.0	

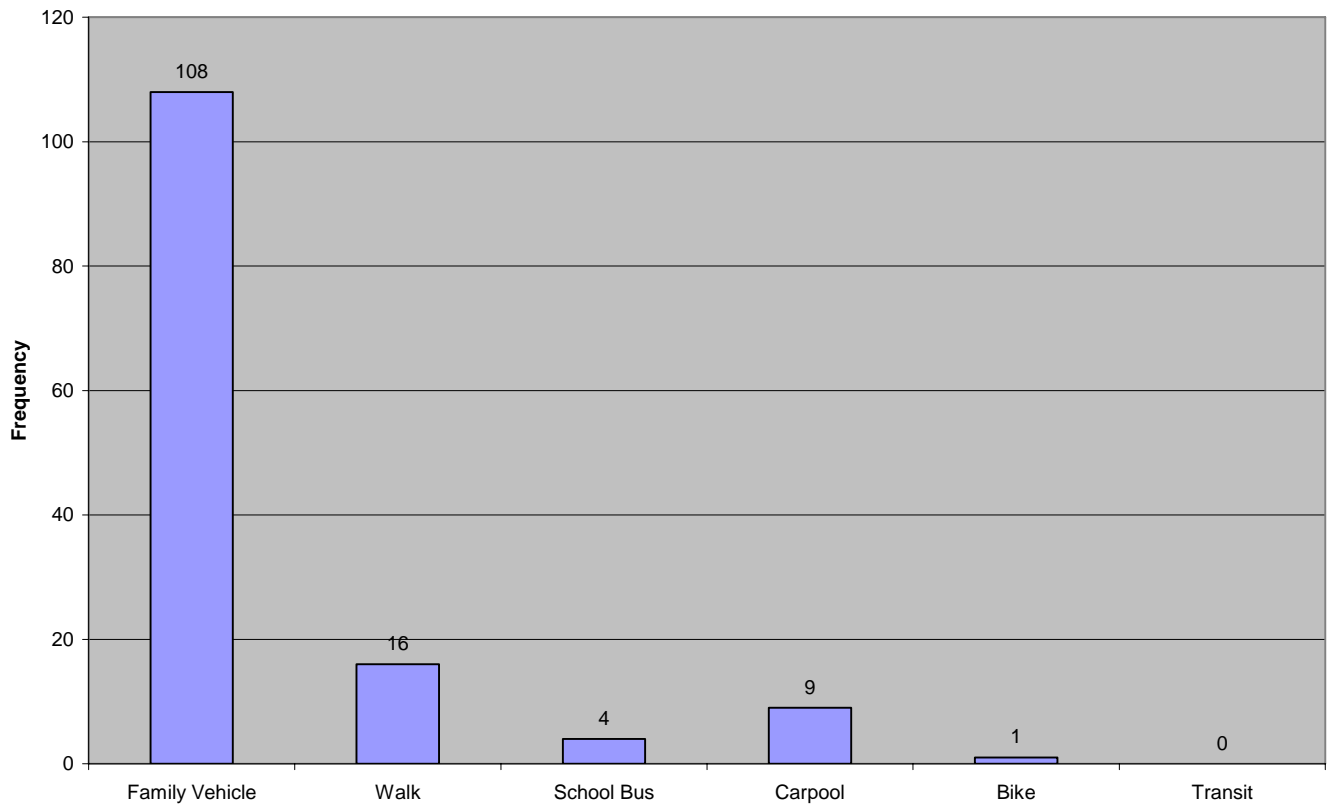
California Department of Education: DataQuest 2007-2008



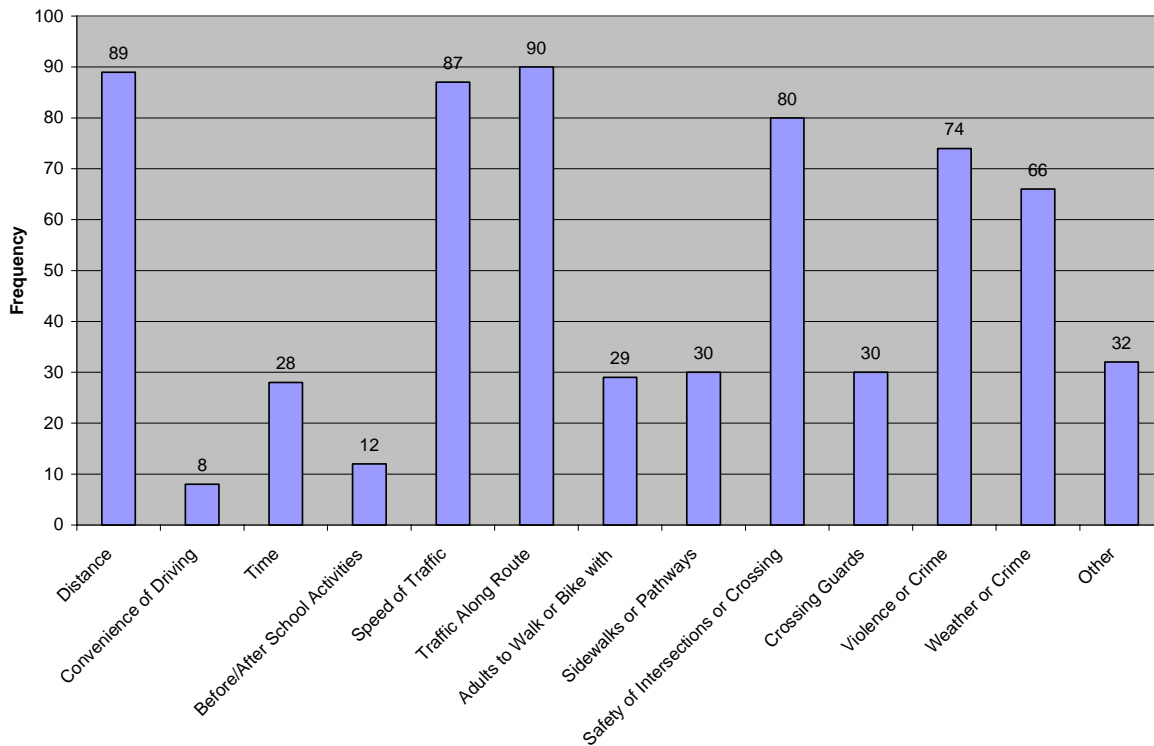
Means of Child Travels to School



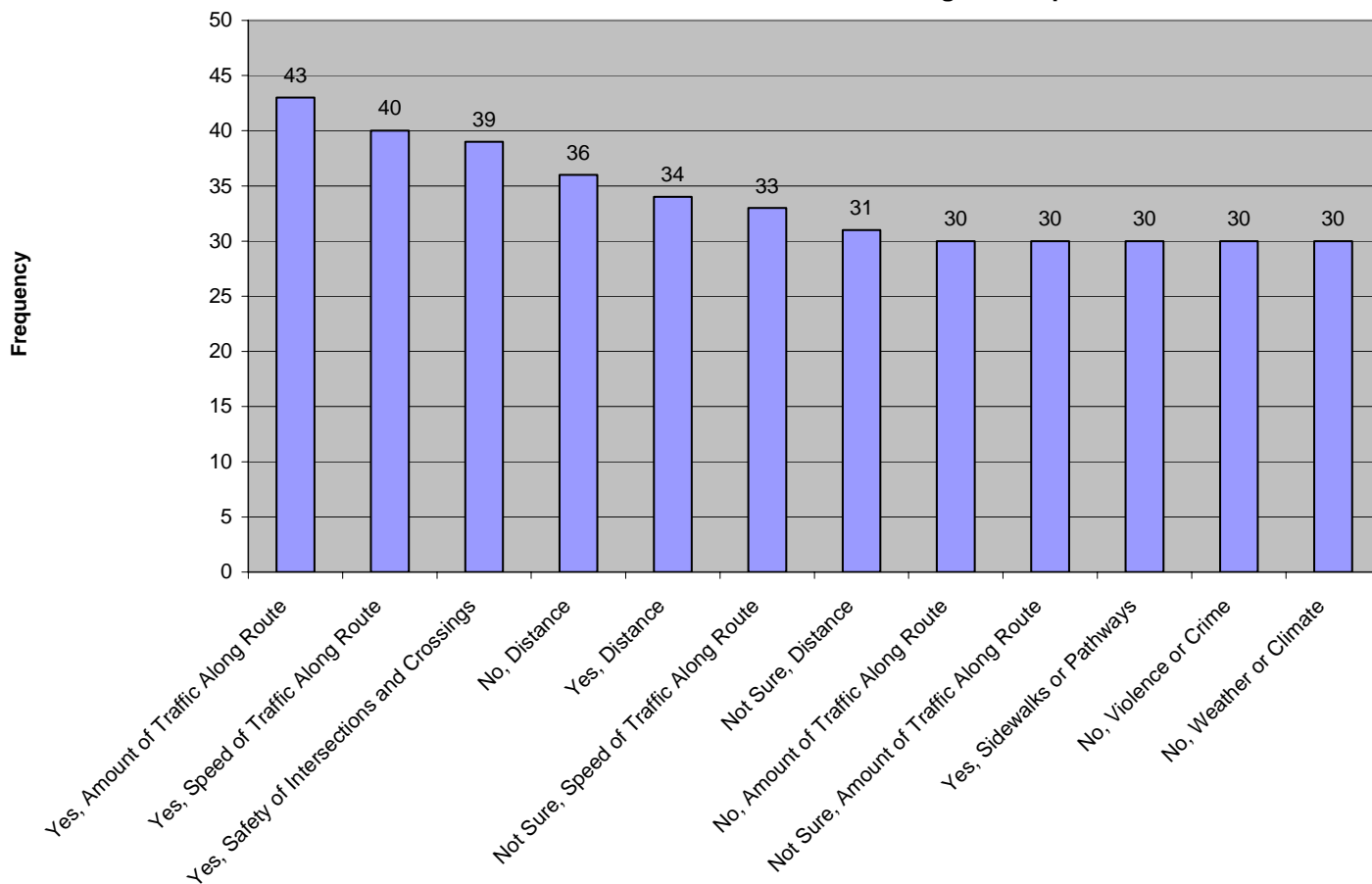
Means Child Travels Home



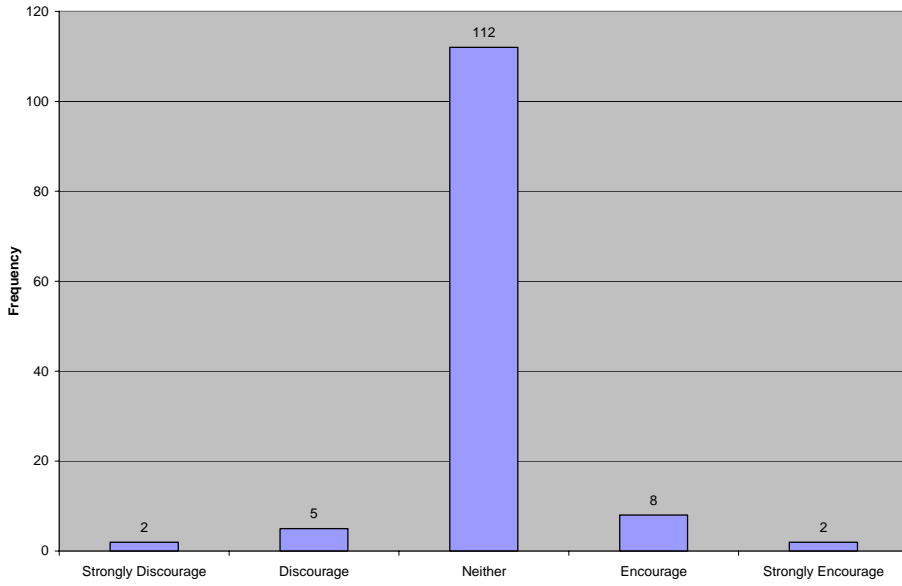
Reasons to Allow (or Not) Child to Walk or Bike to/from School



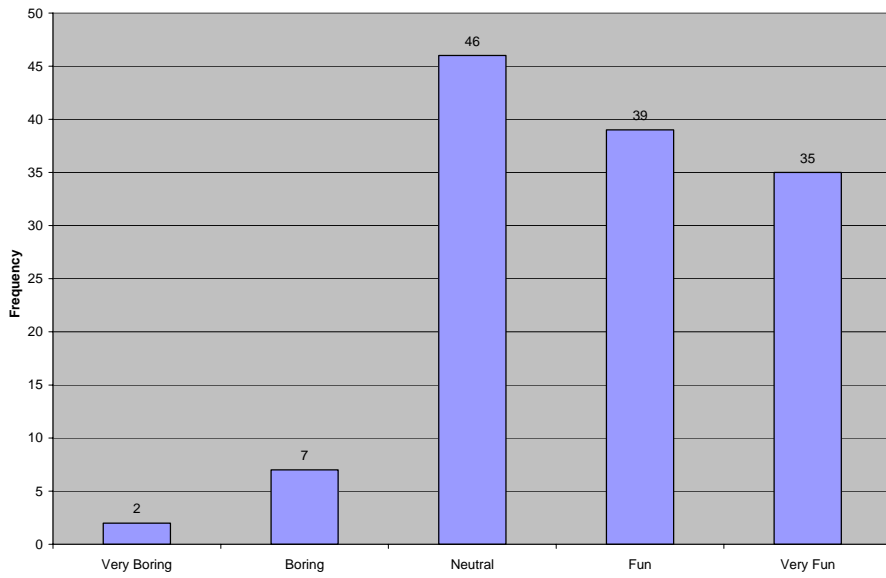
Allow Child to Walk or Bike if Problem Changed or Improved



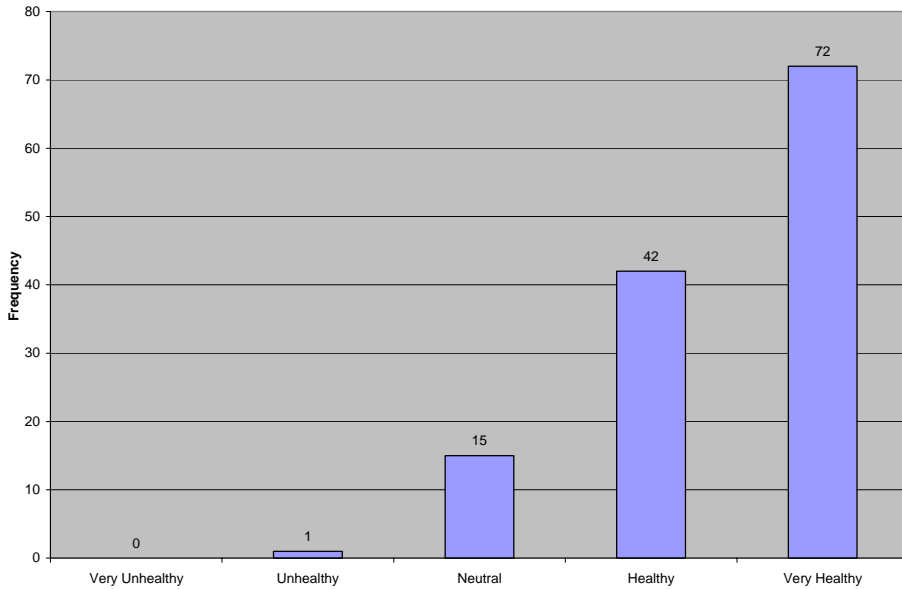
School's Encouragement or Discouragement of Walking or Biking to/from School



Child's Level of Fun to Walk or Bike to/from School



Child's Level of Health to Walk or Bike to/from School



Mode of Transportation to School	Travel time to School < 5 min	Travel time to School 5-10 min	Travel time to School 11-20 min	Travel time to School > 20 min	Travel time to School Don't Know
Family Vehicle (125)	29	64	26	5	
Walk (7)	2	3	1	1	
School Bus (5)	0	1	2	1	1
Carpool (5)		3	2		
Bike (1)	1				
Mode of Transportation from School					
Family Vehicle (93)	20	37	18	5	
Walk (13)		8	2		1
School Bus (3)				1	1